

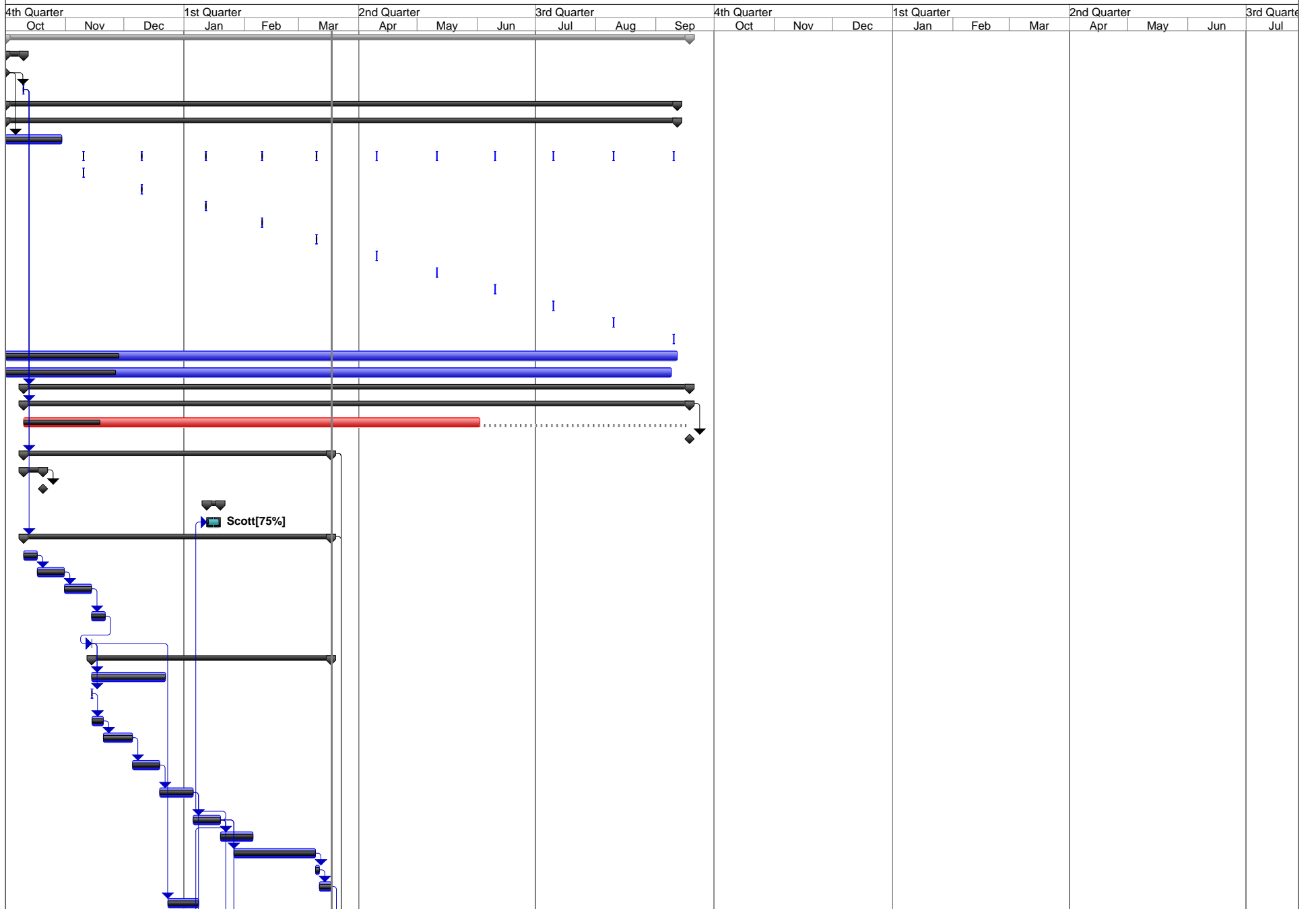
S13-500 MOD4 LexEVS Project Plan

| ID | JIRA# | % Complete | Task Name | Duration | Predecessors | Start | Finish | Resource Names | Work | Sep |
|----|------------|------------|---|----------------------|--------------|---------------------|---------------------|-----------------------|---------------------|-----|
| 0 | | 36% | S13-500 MOD4 LexEVS Project Plan | 247.13 days | | Wed 10/1/14 | Fri 9/18/15 | | 1,900.58 hrs | |
| 1 | | 100% | Initiate | 7.13 days | | Wed 10/1/14 | Fri 10/10/14 | | 3 hrs | |
| 2 | | 100% | Contract Sign-off | 0 days | | Wed 10/1/14 | Wed 10/1/14 | | 0 hrs | |
| 3 | | 100% | Project Kick-off | 1 hr | 2FS+7 days | Fri 10/10/14 | Fri 10/10/14 | Craig,Scott,Cory | 3 hrs | |
| 4 | | 21% | Planning & Control | 243 days | | Wed 10/1/14 | Fri 9/11/15 | | 252 hrs | |
| 5 | | 21% | Project Management | 243 days | | Wed 10/1/14 | Fri 9/11/15 | | 252 hrs | |
| 6 | | 100% | Update Project Wiki | 21 days | 2 | Wed 10/1/14 | Wed 10/29/14 | Craig[5%] | 8 hrs | |
| 7 | | 45% | Monthly Status & Financial Reporting | 213.13 days | | Mon 11/10/14 | Thu 9/10/15 | | 22 hrs | |
| 8 | | 100% | Monthly Status & Financial Reporting 1 | 1 hr | | Mon 11/10/14 | Mon 11/10/14 | Craig,Scott | 2 hrs | |
| 9 | | 100% | Monthly Status & Financial Reporting 2 | 1 hr | | Wed 12/10/14 | Wed 12/10/14 | Craig,Scott | 2 hrs | |
| 10 | | 100% | Monthly Status & Financial Reporting 3 | 1 hr | | Mon 1/12/15 | Mon 1/12/15 | Craig,Scott | 2 hrs | |
| 11 | | 100% | Monthly Status & Financial Reporting 4 | 1 hr | | Tue 2/10/15 | Tue 2/10/15 | Craig,Scott | 2 hrs | |
| 12 | | 100% | Monthly Status & Financial Reporting 5 | 1 hr | | Tue 3/10/15 | Tue 3/10/15 | Craig,Scott | 2 hrs | |
| 13 | | 0% | Monthly Status & Financial Reporting 6 | 1 hr | | Fri 4/10/15 | Fri 4/10/15 | Craig,Scott | 2 hrs | |
| 14 | | 0% | Monthly Status & Financial Reporting 7 | 1 hr | | Mon 5/11/15 | Mon 5/11/15 | Craig,Scott | 2 hrs | |
| 15 | | 0% | Monthly Status & Financial Reporting 8 | 1 hr | | Wed 6/10/15 | Wed 6/10/15 | Craig,Scott | 2 hrs | |
| 16 | | 0% | Monthly Status & Financial Reporting 9 | 1 hr | | Fri 7/10/15 | Fri 7/10/15 | Craig,Scott | 2 hrs | |
| 17 | | 0% | Monthly Status & Financial Reporting 10 | 1 hr | | Mon 8/10/15 | Mon 8/10/15 | Craig,Scott | 2 hrs | |
| 18 | | 0% | Monthly Status & Financial Reporting 11 | 1 hr | | Thu 9/10/15 | Thu 9/10/15 | Craig,Scott | 2 hrs | |
| 19 | | 17% | Ongoing Project Management | 12 mons | | Wed 10/1/14 | Fri 9/11/15 | Craig[2%] | 30 hrs | |
| 20 | | 17% | Ongoing Project Oversight | 12 mons | | Wed 10/1/14 | Tue 9/8/15 | Dr. Chute[10%] | 192 hrs | |
| 21 | | 53% | Execute | 240 days 3 | | Fri 10/10/14 | Fri 9/18/15 | | 1,645.58 hrs | |
| 22 | | 17% | Ongoing Operational Support | 240 days 3 | | Fri 10/10/14 | Fri 9/18/15 | | 400 hrs | |
| 23 | | 17% | Tech Support/Forum Management/Ongoing Technical Expertise | 12 mons | | Fri 10/10/14 | Fri 9/18/15 | Scott[25%] | 400 hrs | |
| 24 | | 0% | Milestone: Ongoing Operational Support Complete | 0 days | 22 | Fri 9/18/15 | Fri 9/18/15 | | 0 hrs | |
| 25 | | 98% | Maintenance and Support Development | 109.79 days 3 | | Fri 10/10/14 | Tue 3/17/15 | | 1,049.58 hrs | |
| 26 | | 100% | Supporting Item Development | 6 days | | Fri 10/10/14 | Mon 10/20/14 | | 20 hrs | |
| 28 | | 100% | Milestone: Supporting Item Development Complete | 0 days | 26 | Mon 10/20/14 | Mon 10/20/14 | | 0 hrs | |
| 29 | | 10% | 6.2 Deployment Tasks | 5 days | | Mon 1/12/15 | Mon 1/19/15 | | 30 hrs | |
| 30 | | 10% | Deployment Tasks | 5 days | 44 | Mon 1/12/15 | Mon 1/19/15 | Scott[75%] | 30 hrs | |
| 31 | | 100% | JIRA Item Development | 109.79 days 3 | | Fri 10/10/14 | Tue 3/17/15 | | 999.58 hrs | |
| 32 | LEXEVS-671 | 100% | SNOMEDCT does not load hierarchy or root nodes. | 1 wk | | Fri 10/10/14 | Fri 10/17/14 | Scott[75%] | 30 hrs | |
| 33 | LEXEVS-669 | 100% | Latest Version of SNOMEDCT Does not load transitivity table | 2 wks | 32 | Fri 10/17/14 | Fri 10/31/14 | Scott[75%] | 60 hrs | |
| 34 | LEXEVS-667 | 100% | TreeService getTree method fails on remote call when the root node code appears in multiple namespaces. | 2 wks | 33 | Fri 10/31/14 | Fri 11/14/14 | Scott[75%] | 60 hrs | |
| 35 | LEXEVS-598 | 100% | TreeService getTree method can fail when the root node code appears in multiple namespaces. | 1 wk | 34 | Fri 11/14/14 | Fri 11/21/14 | Scott[75%] | 30 hrs | |
| 36 | LEXEVS-680 | 100% | Remove GEM loader documentation | 1 hr | 35 | Fri 11/14/14 | Fri 11/14/14 | Scott[75%] | 0.75 hrs | |
| 37 | | 100% | OWL2 Development | 84.67 days | | Fri 11/14/14 | Tue 3/17/15 | | 705 hrs | |
| 38 | | 100% | OWL2 Design Discussions | 5 wks | 36 | Fri 11/14/14 | Mon 12/22/14 | Scott[75%] | 150 hrs | |
| 39 | LEXEVS-641 | 100% | OWL2 loader uses VersionIRI, but doesn't have a wide enough column | 4 hrs | 36 | Fri 11/14/14 | Fri 11/14/14 | Scott[75%] | 3 hrs | |
| 40 | LEXEVS-614 | 100% | OWL2 associations and annotations on associations. | 3.5 days | 39 | Fri 11/14/14 | Thu 11/20/14 | Scott[75%] | 21 hrs | |
| 41 | LEXEVS-684 | 100% | OWL2 Loader does not properly Parse output from render | 10 days | 40 | Thu 11/20/14 | Fri 12/5/14 | Scott[75%] | 60 hrs | |
| 42 | LEXEVS-685 | 100% | OWL2 Loader loads disJointWith association as equivalent class | 10 days | 41 | Fri 12/5/14 | Fri 12/19/14 | Scott[75%] | 60 hrs | |
| 43 | LEXEVS-583 | 100% | OWL2 data: restrictions on a class using datatype properties | 6.67 days | 42 | Fri 12/19/14 | Mon 1/5/15 | Scott[75%] | 40 hrs | |
| 44 | | 100% | OWL Evaluation | 2 wks | 43 | Mon 1/5/15 | Mon 1/19/15 | NCI Resource | 80 hrs | |
| 45 | | 100% | Revisit Tree Service | 2.5 wks | 44 | Mon 1/19/15 | Thu 2/5/15 | Scott[75%] | 75 hrs | |
| 46 | | 100% | OWL2 Updates | 6 wks | 44FS+1 wk | Mon 1/26/15 | Mon 3/9/15 | Scott[75%] | 180 hrs | |
| 47 | | 100% | OWL2 Design Document | 2 days | 46 | Mon 3/9/15 | Wed 3/11/15 | Scott[75%] | 12 hrs | |
| 48 | | 100% | OWL2 Finalization | 4 days | 47 | Wed 3/11/15 | Tue 3/17/15 | Scott[75%] | 24 hrs | |
| 49 | LEXEVS-623 | 100% | Mapping extension search methods fail on distributed mode. | 9.67 days | 36 | Tue 12/23/14 | Thu 1/8/15 | Scott[75%],Kevin[25%] | 53.33 hrs | |

S13-500 MOD4 LexEVS Project Plan

| ID | JIRA# | % Complete | Task Name | Duration | Predecessors | Start | Finish | Resource Names | Work | Sep |
|----|---------------|-------------|--|----------------|--------------|--------------------|--------------------|----------------------|----------------|-----|
| 50 | LEXEVS-679 | 100% | Expand loader documentation to include creating, running, and errors information. | 2.67 days | 44 | Mon 1/12/15 | Thu 1/15/15 | Scott[75%] | 16 hrs | |
| 51 | LEXEVSCTS2-8 | 100% | UI - Only 50 entries are returned for value sets that have more than 50 entries | 1 hr | 27FS+4 wks | Mon 11/17/14 | Mon 11/17/14 | Cory[50%] | 0.5 hrs | |
| 52 | LEXEVSCTS2-21 | 100% | Value Set resolution fails when a value set name is more than a particular number of characters. | 3 days | 51 | Mon 11/17/14 | Wed 12/10/14 | Cory[50%] | 12 hrs | |
| 53 | LEXEVSCTS2-27 | 100% | Create interactive CTS2 API documentation | 1 wk | 52 | Wed 12/10/14 | Wed 12/17/14 | Cory[50%] | 20 hrs | |
| 54 | LEXEVS-636 | 100% | LexEVValueSetDefinitionServices exportValueSetResolution method returns unprocessable InputStream. | 0.8 wks | | Fri 1/16/15 | Thu 1/22/15 | Kevin[25%] | 8 hrs | |
| 55 | LEXEVSCTS2-28 | 100% | NLM (VSAC) CTS2 Service authentication is failing | 2 days | 43 | Mon 1/5/15 | Wed 1/7/15 | Kevin[25%] | 4 hrs | |
| 56 | | 0% | Milestone: JIRA Item Development Complete | 0 days | 31 | Tue 3/17/15 | Tue 3/17/15 | | 0 hrs | |
| 57 | | 0% | Milestone - Maintenance and Support Development Complete | 0 days | 25 | Tue 3/17/15 | Tue 3/17/15 | | 0 hrs | |
| 58 | | 100% | Next Release Planning | 10 days | | Mon 1/19/15 | Mon 2/2/15 | | 100 hrs | |
| 59 | | 100% | Agile Configuration and Project Planning | 2 wks | 44 | Mon 1/19/15 | Mon 2/2/15 | Cory[25%],Craig | 100 hrs | |
| 60 | | 90% | Update Technical Documentation | 39 days | | Mon 1/26/15 | Fri 3/20/15 | | 36 hrs | |
| 61 | | 100% | Deploy CTS2 API Documentation Service (External) | 2 days | 44FS+1 wk | Mon 1/26/15 | Wed 1/28/15 | Cory[25%] | 4 hrs | |
| 62 | | 100% | Documentation Structure | 1 day | 61 | Wed 1/28/15 | Thu 1/29/15 | Cory[25%] | 2 hrs | |
| 63 | | 100% | Design and Architecture Guide | 1 day | 62 | Thu 1/29/15 | Fri 1/30/15 | Cory[25%] | 2 hrs | |
| 64 | | 100% | Programmer's Guide | 1 day | 63 | Fri 1/30/15 | Mon 2/2/15 | Cory[25%] | 2 hrs | |
| 65 | | 100% | Install Guide | 1 day | 64 | Mon 2/2/15 | Tue 2/3/15 | Cory[25%] | 2 hrs | |
| 66 | | 100% | Administrator Guide | 1 day | 65 | Tue 2/3/15 | Wed 2/4/15 | Cory[25%] | 2 hrs | |
| 67 | | 0% | SNOMED loader documentation | 1 day | 48 | Tue 3/17/15 | Wed 3/18/15 | Scott[75%],Cory[50%] | 10 hrs | |
| 68 | | 100% | Migration Documentation - Distributed | 1 day | 67 | Wed 3/18/15 | Thu 3/19/15 | Scott[75%] | 6 hrs | |
| 69 | | 100% | Migration Documentation - CTS2 Services | 1 day | 68 | Thu 3/19/15 | Fri 3/20/15 | Scott[75%] | 6 hrs | |
| 70 | | 0% | Milestone: Update Technical Documentation Complete | 0 days | 60 | Fri 3/20/15 | Fri 3/20/15 | | 0 hrs | |
| 71 | | 0% | Tier Deployment at NCI | 6 days | | Tue 3/17/15 | Wed 3/25/15 | | 60 hrs | |
| 72 | | 0% | Dev Deployment | 6 days | 25 | Tue 3/17/15 | Wed 3/25/15 | | 60 hrs | |
| 73 | | 0% | Deploy Updated LexEVS 6.3 | 2 days | | Tue 3/17/15 | Thu 3/19/15 | Scott[75%],Cory[50%] | 20 hrs | |
| 74 | | 0% | Deploy Updated LexEVS 6.3 CTS2 Service | 2 days | 73 | Thu 3/19/15 | Mon 3/23/15 | Scott[75%],Cory[50%] | 20 hrs | |
| 75 | | 0% | Deploy Updated LexEVS 6.3 URI Resolver Service | 2 days | 74 | Mon 3/23/15 | Wed 3/25/15 | Scott[75%],Cory[50%] | 20 hrs | |
| 76 | | 0% | Milestone: Tier Deployment at NCI | 0 days | 71 | Wed 3/25/15 | Wed 3/25/15 | | 0 hrs | |
| 77 | | 0% | Milestone: S13-500 MOD4 LexEVS Project Plan Complete | 0 days | 71 | Wed 3/25/15 | Wed 3/25/15 | | 0 hrs | |

S13-500 MOD4 LexEVS Project Plan



S13-500 MOD4 LexEVS Project Plan

