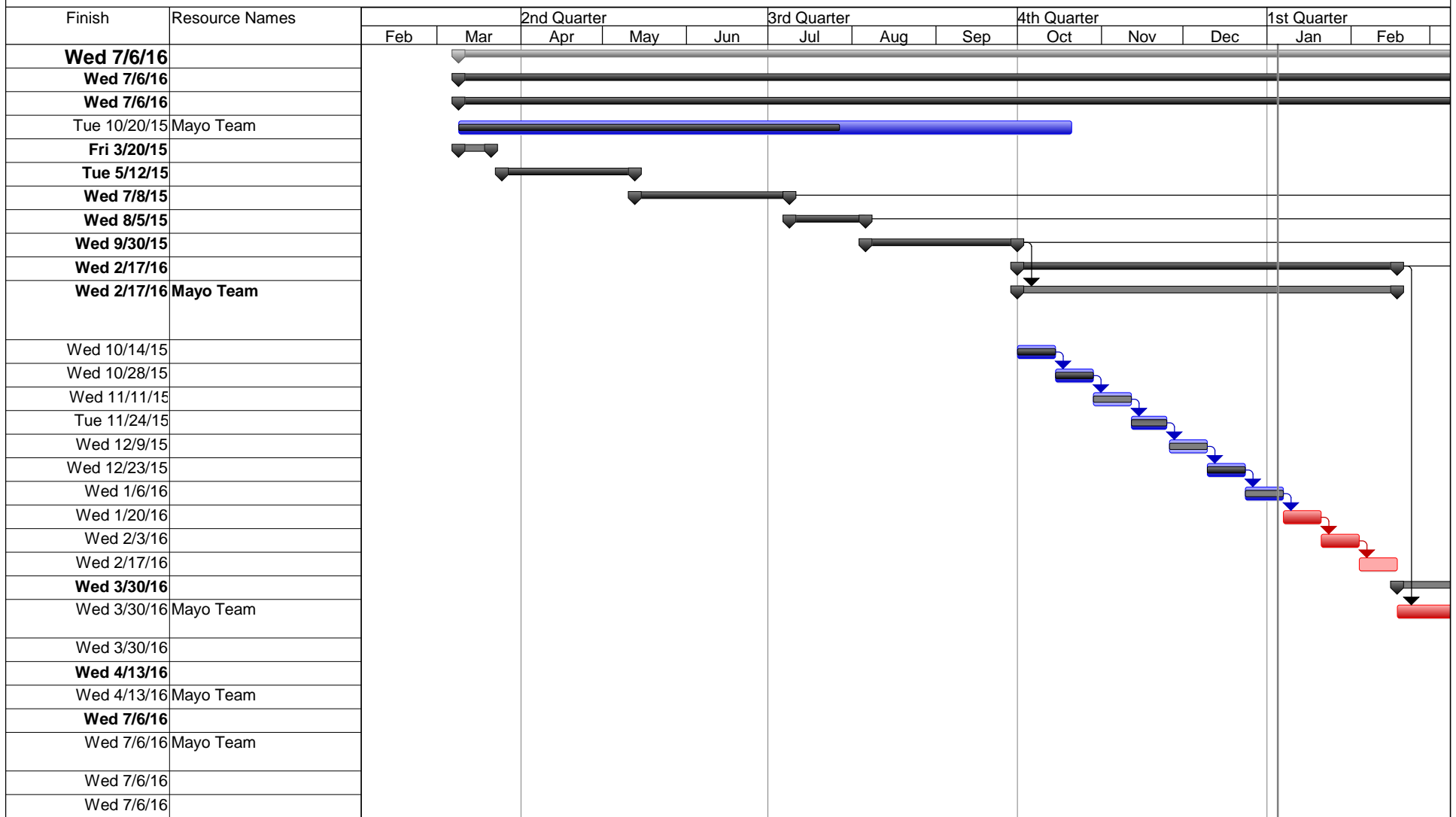


S13-500 MOD4 LexEVS Lucene Project Roadmap

ID	JIRA#	% Complete	Task Name	Duration	Predecessor	Start
0		62%	S13-500 MOD4 LexEVS Lucene Project Roadmap	346 days		Mon 3/9/15
1		62%	Execute	346 days		Mon 3/9/15
2		62%	Technical Development	346 days		Mon 3/9/15
3	LEXEVS-849	62%	Provide support to the existing LexEVS project	8 mons		Mon 3/9/15
4		100%	6.4 - Phase -Planning	10 days		Mon 3/9/15
6		100%	6.4 - Phase - Architecture and Design	35 days		Wed 3/25/15
11		100%	6.4 - Phase - Phase 1	40 days		Wed 5/13/15
16		100%	6.4 - Phase - Phase 2	20 days		Thu 7/9/15
20		100%	6.4 - Phase - Phase 3	39 days		Thu 8/6/15
26		70%	6.4 - Phase - Phase 4 (60 days)	100 days		Thu 10/1/15
27	LEXEVS-696	70%	Demonstrate all previous LexEVS functionality as implemented with the new Lucene and 100% of unit test pass	100 days	20	Thu 10/1/15
28		100%	Sprint 14	2 wks		Thu 10/1/15
29		100%	Sprint 15	2 wks	28	Thu 10/15/15
30		100%	Sprint 16	2 wks	29	Thu 10/29/15
31		100%	Sprint 17	9 days	30	Thu 11/12/15
32		100%	Sprint 18	2 wks	31	Thu 11/26/15
33		100%	Sprint 19	2 wks	32	Thu 12/10/15
34		100%	Sprint 20	2 wks	33	Thu 12/24/15
35		0%	Sprint 21	2 wks	34	Thu 1/7/16
36		0%	Sprint 22	2 wks	35	Thu 1/21/16
37		0%	Sprint 23	2 wks	36	Thu 2/4/16
38		0%	6.4 - Phase - Phase 5	30 days		Thu 2/18/16
39	LEXEVS-697	0%	Demonstrate complete LexEVS functionality including remote API and CTS2 services	30 days	26	Thu 2/18/16
40		0%	Milestone - Functionality Complete	0 days	16,20,26,38	Wed 3/30/16
41		0%	6.4 - Phase - Documentation	10 days		Thu 3/31/16
42	LEXEVS-725	0%	Provide documentation for the product release	10 days	38	Thu 3/31/16
43		0%	6.4 - Phase - Tier Deployment	60 days		Thu 4/14/16
44	LEXEVS-728	0%	Demonstrate complete LexEVS functionality running on NCI production.	60 days	41	Thu 4/14/16
45		0%	Milestone - Technical Development Complete	0 days	2	Wed 7/6/16
46		0%	Milestone: S13-500 MOD4 LexEVS Lucene Project Roadmap Complete	0 days	1	Wed 7/6/16

S13-500 MOD4 LexEVS Lucene Project Roadmap



S13-500 MOD4 LexEVS Lucene Project Roadmap

