

Network Rave Data Standards (NRDS) Policy and Governance WG

Judi Manola and Mike Montello

Agenda

- NRDS Standard Policies
- NCTN and ETCTN Roles/Responsibilities
- NCTN/ETCTN Compliance Review Process
- NCTN/ETCTN Annual Standards Review Process
- Next Steps

NCTN and ETCTN Standards Policies

- The standard question text can-NOT be changed except if pre-approved by NRDS WG (exception NOT the rule)
- A response CAN be eliminated if it is not appropriate for a specific study.
- Additional responses can-NOT be added to a pick list.
- Responses can-NOT be merged.
- The question and answer sets MUST follow the style guide recommendations.
- **Coded values specific to each group can be used in their own systems but NOT in Rave.**

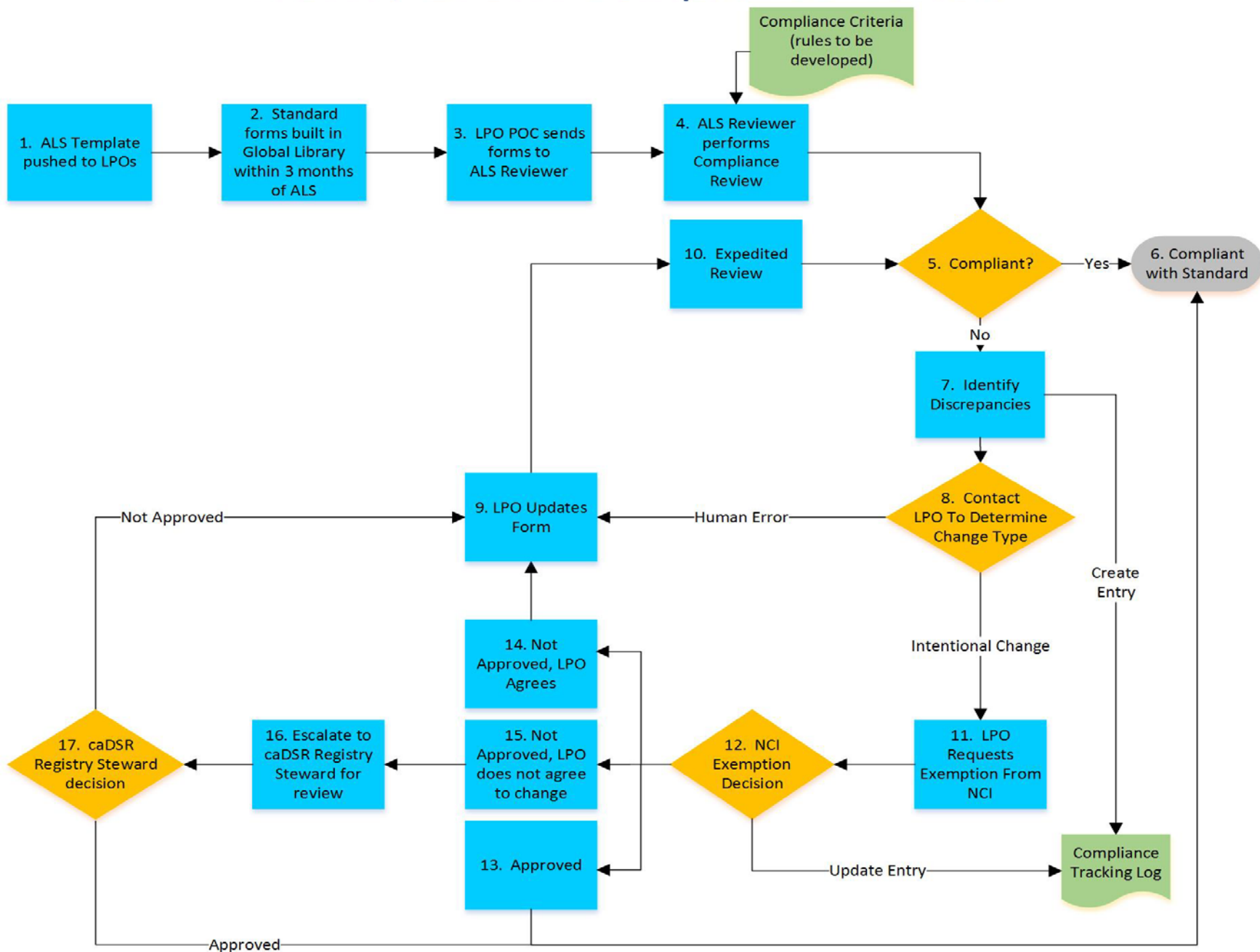
NCTN and ETCTN Roles/Responsibilities

- **Lead Protocol Organization (LPO)** – NCTN and ETCTN organizations that develop NCI Clinical Trials
- **NRDS Content WG** – A working group under the NRDS initiative that serves as a governance body to provide direction on recommendations on the NRDS Standards **in Rave**.
- **NRDS Policy and Governance WG** - A working group under the NRDS initiative that serves as a governance body to provide direction on policies and procedures on the NRDS Standards.

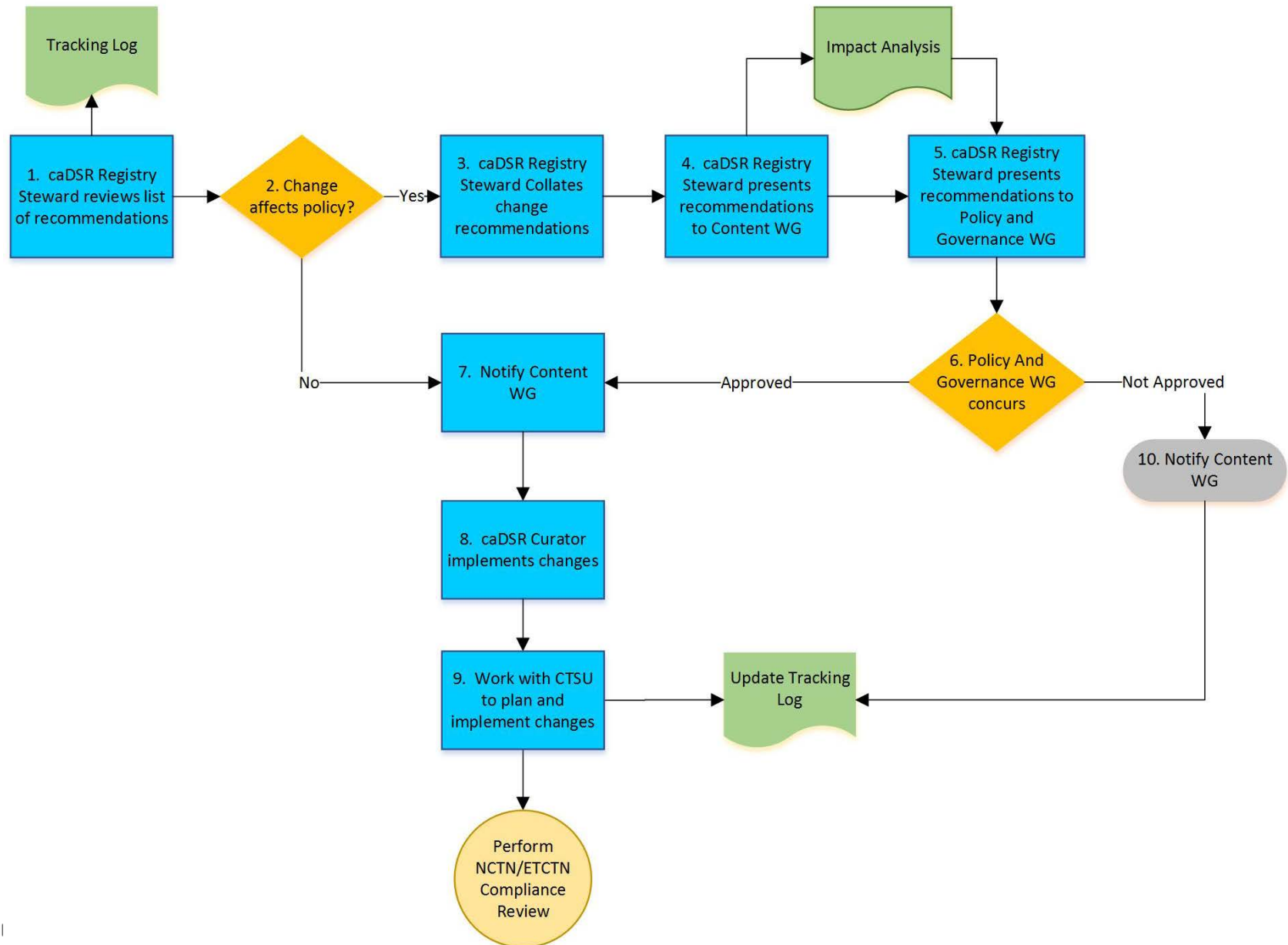
NCTN and ETCTN Roles/Responsibilities

- **ALS Submitter**- The organization that maintains the changes to the forms and provides updated ALS documentation to the NCTN and ETCTN.
- **ALS Reviewer**- The caDSR curation team designee that reviews form changes to ensure they comply with the standards.
- **caDSR Registry Steward** – NCI representative that reviews and analyzes change recommendations provided by the NRDS stakeholders.
- **caDSR Curator** – The caDSR curator develops and maintains metadata for their program and corrects issues identified during quality assurance reviews

NCTN / ETCTN Compliance Review



NCTN / ETCTN Annual Standards Review



Next Steps

- Continue defining governance and policies

Reference Information / Questions

- NCTN Co-Lead
 - Judith Manola, M.S., Biostatistician, Department of Biostatistics and Computational Biology, Dana-Farber Cancer Institute
 - jmanola@jimmy.harvard.edu
- NCI Co-Lead
 - Mike Montello, PharmD, MBA
Associate Branch Chief for Clinical Trials Technology
 - montellom@mail.nih.gov
- Project Management Support
 - Neesha Desai, PMP, Project Manager, NCI CBIIT
 - Neesha.Desai@nih.gov



**NATIONAL
CANCER
INSTITUTE**

www.cancer.gov

www.cancer.gov/espanol