

LexEVS 5.x GUI Administration Tool

Contents of this Page

- [Introduction](#)
- [Launching the GUI Administration Tool](#)
- [Administrative Menu Commands](#)
- [Administrative Button Commands](#)

Introduction

This document is a section of the [Administration Guide](#).

Launching the GUI Administration Tool

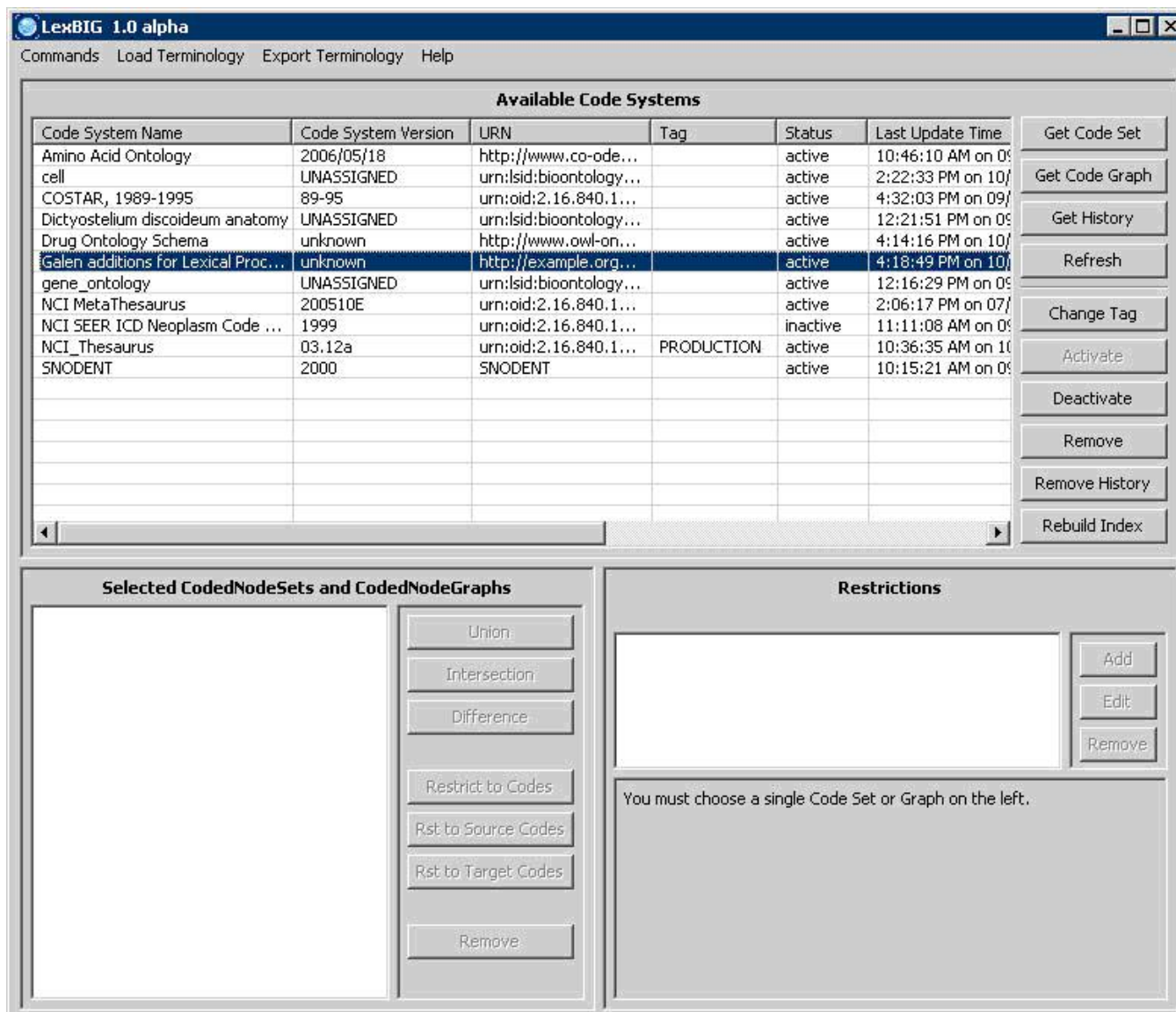
If you choose to install the LexEVS GUI when you installed LexEVS, you will have a `gui` folder inside of your LexEVS base installation. If you installed the GUI for all operating systems, you should have the following programs:

- `Linux_64-lbGUI.sh`
- `Linux-lbGUI.sh`
- `OSX-lbGUI.command`
- `Windows-lbGUI.bat`
- `Windows-lbGUI -browser.bat`

We provide two Windows shell script versions which allow a choice between the full-fledged interface for loading, managing, and end-use, or the interface for end-use only.

This shell script provides an example by which any shell script can pass an argument option "-d" into the java command launching the LexEVS GUI application, restricting the end user to browsing only, and allowing no loading or management of terminologies.

Launch the GUI by executing the appropriate script for your platform. You will be presented with an application that looks like the following figure:



This application will let you perform most administrative functions that are available in the LexEVS API. To enable the administrative functions, first go to the 'Commands' menu, and then click on the 'Enable Admin Options' submenu. This will enable all of the commands that can make changes to the LexEVS environment.

This guide covers only the administrative commands. Refer to the *LexEVS Programmer's Guide* for instructions on using the rest of the LexEVS GUI.

Administrative Menu Commands

Commands Menu

SubmenuProperty Name	Menu Action
Configure	This menu option will bring up a dialog which will show you all of the options from the current <code>lbconfig.props</code> file. You can make changes to individual variable here - but these changes will only affect the GUI - they will not be written back out to the <code>lbconfig.props</code> file. You can also choose which <code>lbconfig.props</code> file that you want to use.
Enable Admin Options	This option enables or disables all of the GUI features which are considered administrative options.
Clean Up	This command will run the clean up orphaned resources tool. It will give you a listing of any resources that are orphaned in the LexEVS environment, and give you the option to remove them.
View Log File	This will show you the all of the logs messages that have occurred during the LexEVS GUI session. The log file viewer also has choices to let you customize the types of messages that are logged.
Exit	Close the application.

Export Terminology Menu

SubmenuProperty Name	Menu Action
Export as OBO	This menu option will launch an exporter that exports the selected terminology into an OBO 1.2 format.
Export as LexGrid XML	This menu option will launch an exporter that exports the selected terminology into the LexGrid XML format.

Administrative Button Commands

These buttons are located in the lower right area of the top half of the LexEVS GUI.

Button	Button Action
Change Tag	Brings up a dialog that allows you to set (or remove) the tag on the selected terminology.
Activate	Activates the selected terminology. Only available if the terminology is currently deactivated.
Deactivate	Deactivates the selected terminology. Only available if the terminology is currently activated.
Remove	Deletes the selected terminology.
Remove History	Removes the NCI History data for the selected terminology. Only applicable to NCI Thesaurus terminologies.
Rebuild Index	Rebuilds the internal indexes for the selected terminology. If no terminology is selected, rebuilds the indexes for all terminologies.