

# Protege and UTF-8

## Protégé and UTF-8

Protégé is utf-8 compatible, which means it can process and display utf-8 characters. In the course of editing, many editors prepare their concepts or concept information in Microsoft Word or Excel. They then copy from Microsoft and paste into Protégé. This can cause problems because Microsoft is not purely utf-8 compatible. The paste operation can introduce characters that Protégé does not know how to process. The instructions below show how to avoid these problems.

### Table of characters in Microsoft and their utf-8 equivalents

Thanks to [Interwingly](#) for providing this table.

If you are running on a Microsoft platform, or cut and paste from documents produced by Microsoft software, or even allow comments to be posted by people who might be doing one of the above, you need to be aware of the differences, summarized by the following table.

character	win-1252 decimal	win-1252 hex	win-1252 octal	unicode html	unicode xml	unicode url
€	128	80	200	&euro;	&#x20AC;	%E2%82%AC
,	130	82	202	&sbquo;	&#x201A;	%E2%80%9A
f	131	83	203	&fnof;	&#x192;	%C6%92
”	132	84	204	&bdquo;	&#x201E;	%E2%80%9E
...	133	85	205	&hellip;	&#x2026;	%E2%80%A6
†	134	86	206	&dagger;	&#x2020;	%E2%80%A0
‡	135	87	207	&Dagger;	&#x2021;	%E2%80%A1
^	136	88	210	&circ;	&#x2C6;	%CB%86
‰	137	89	211	&permil;	&#x2030;	%E2%80%B0
Š	138	8A	212	&Scaron;	&#x160;	%C5%A0
‘	139	8B	213	&lsaquo;	&#x2039;	%E2%80%B9

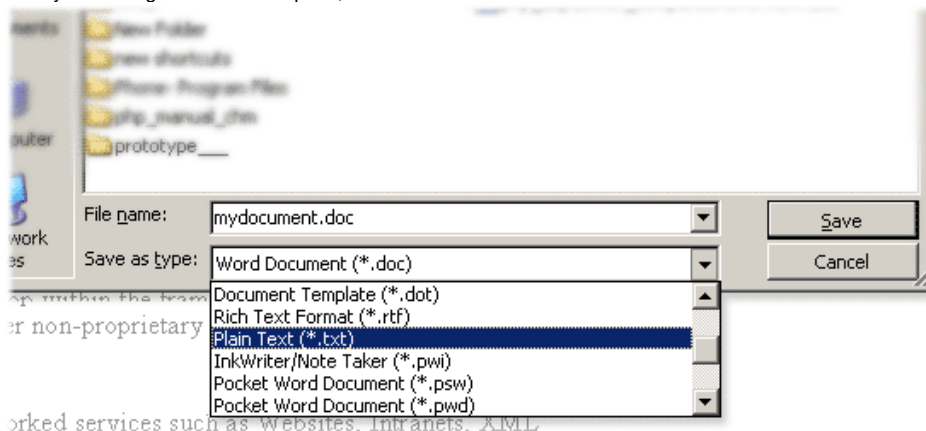
Œ	140	8C	214	&OElig;	&#x152;	%C5%92
Ž	142	8E	216	&x17D;	&#x17D;	%C5%BD
‘	145	91	221	&lsquo;	&#x2018;	%E2%80%98
’	146	92	222	&rsquo;	&#x2019;	%E2%80%99
“	147	93	223	&ldquo;	&#x201C;	%E2%80%9C
”	148	94	224	&rdquo;	&#x201D;	%E2%80%9D
•	149	95	225	&bull;	&#x2022;	%E2%80%A2
–	150	96	226	&ndash;	&#x2013;	%E2%80%93
—	151	97	227	&mdash;	&#x2014;	%E2%80%94
˜	152	98	230	&tilde;	&#x2DC;	%CB%9C
™	153	99	231	&trade;	&#x2122;	%E2%84%A2
š	154	9A	232	&scaron;	&#x161;	%C5%A1
›	155	9B	233	&rsaquo;	&#x203A;	%E2%80%BA
œ	156	9C	234	&oelig;	&#x153;	%C5%93
ž	158	9E	236	&#x17E;	&#x17E;	%C5%BE
ÿ	159	9F	237	&Yuml;	&#x178;	%C5%B8

	160	A0		&nbsp;		%C2%A0
–	8211	2013		&#8211;		
—	8212	2014		&#8212;		
'	8217	2019		&#8217;		

## Converting Microsoft Characters to UTF-8 in Word 2003

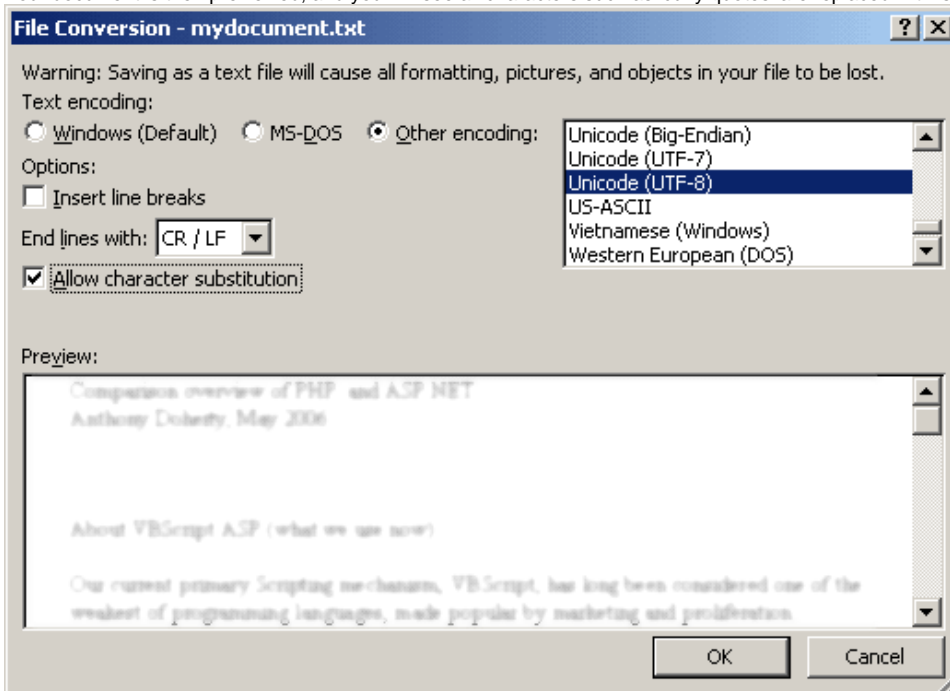
Thanks to [Liverpool John Mores University](#) for providing the following instructions:

- Once your editing in Word is complete, choose **File->Save As...**



- Choose from the format drop-menu the option '**Plain Text (.txt)\***'
- Save the file to a known location, your desktop for example.
- Before the file saves, a dialog box will appear asking you about encoding: Choose '**other encoding**'.
- Then make sure you check the '**Allow Character Substitution**' box.

- Your document is then previewed, and you will see all characters such as 'curly quotes' are replaced with 'safe' ones.

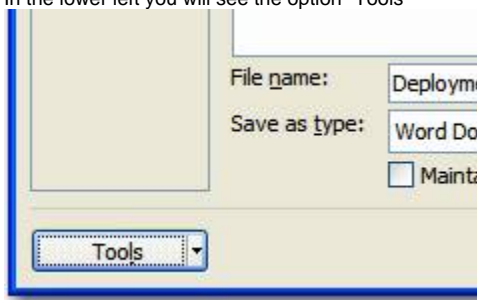


You can then open the saved .txt file and safely copy the contents you require into a web page that uses UTF-8 encoding.

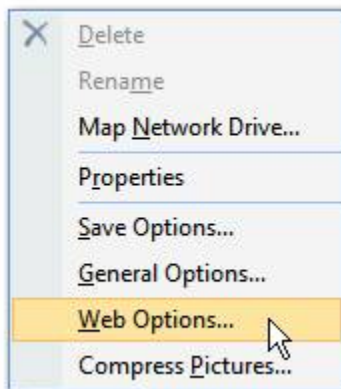
## Converting Microsoft Characters to UTF-8 in Word and Excel 2007

For Word and Excel 2007, the instructions are the same

- Go to File > Save As
- In the lower left you will see the option "Tools"



- Within the Tools drop down, select Web Options



- In the Web Options dialog, go to the Encoding tab and select UTF-8

