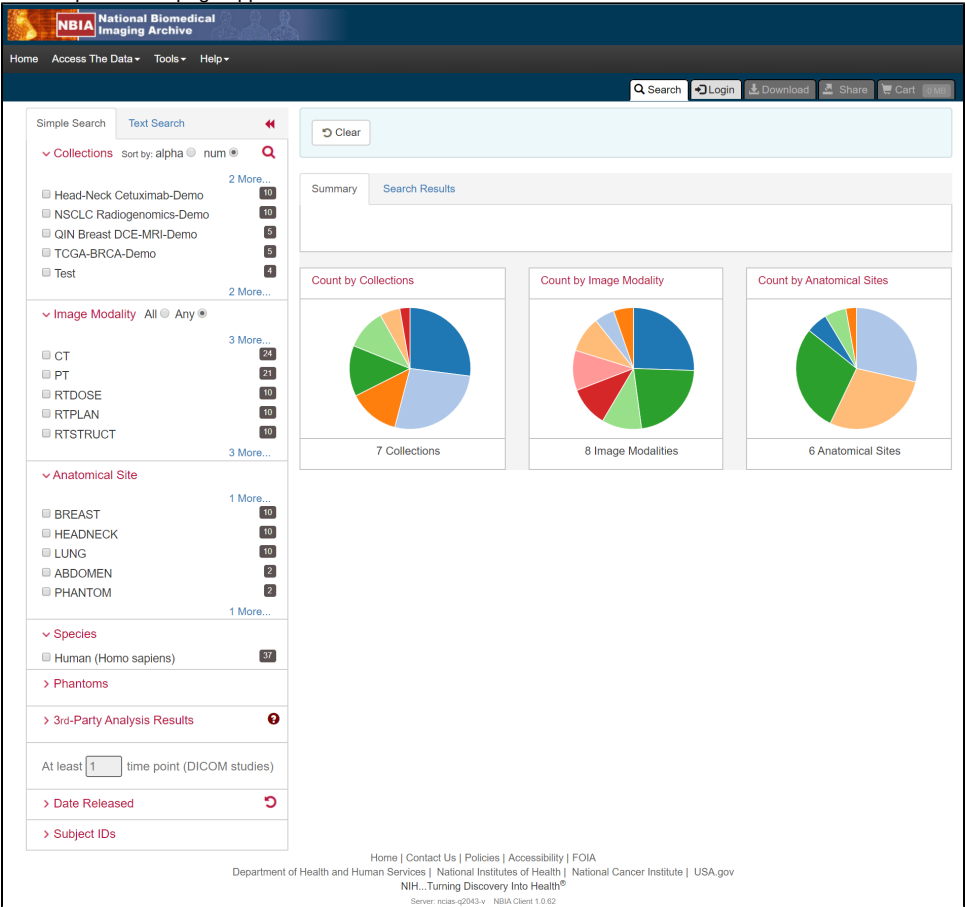


Performing a Simple Search 7.1

A simple search allows you to search for image studies based on a combination of the following search filters: Collections, Image Modality, Anatomical Site, Date released on TCIA, and Subject IDs. The more criteria you select, the fewer results you receive. After you select your search criteria, you can save your query to use later.

To perform a simple search

- 1. On the NBIA home page, click the **Simple Search** tab. The Simple Search page appears.



- 2. Select filters to narrow down the available image series.

To Select	Do This
Collections	<p>Option 1: Click the box next to each collection name you want to select.</p> <p>blocked URL</p> <div><div></div><div>Hovering over a collection name opens a window with information about the collection in it. Quickly move your mouse to this window, were you can select text and click links. The window stays open until you move your mouse away from it.</div></div> <p>blocked URL</p>

Option 2: Click the magnifying glass to enter a name.

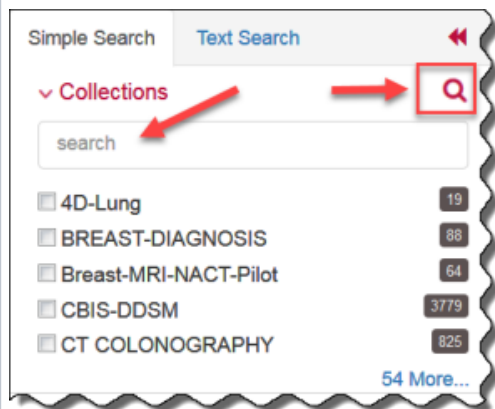



Image
Modality

Click the box next to one or more image modalities.

If you select more than one image modality, clicking **ANY** returns any study that is associated with any of the modalities you selected. Clicking **ALL** returns all studies that are associated with all of the modalities you selected.



When you select the **ANY** search modifier here, only the studies that match your search criteria are returned. Be aware that these may be only be a subset of the studies belonging to a single subject (patient). The potential difference between total studies available and the number of studies returned by your search becomes clearer when you select the Total Studies and Total Series columns to appear

in your search results. To do so, click  at the top of the Search Results tab. Select Total Studies and Total Series in the Pick Columns list.

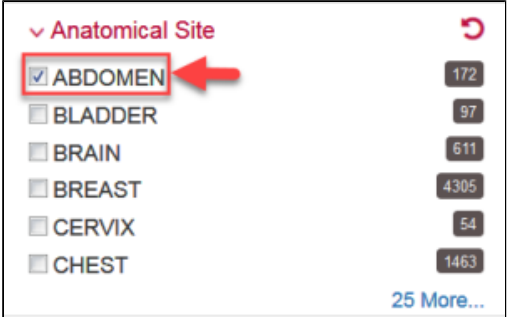
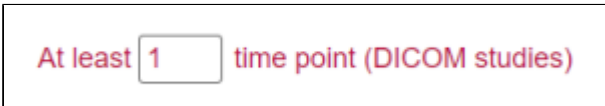
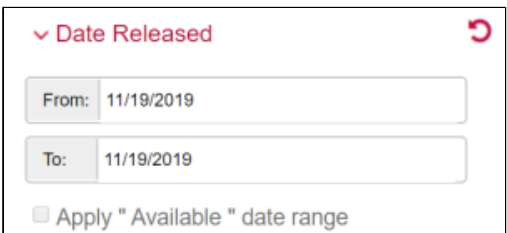
Pick columns

- ☒ Cart
- ☒ Collection ID
- ☒ Subject ID
- ☒ Studies
- ☒ Total Studies
- ☒ Series
- ☒ Total Series


Image Modality All ☐ Any ☒

<input checked="" type="checkbox"/> CT	4408
<input type="checkbox"/> CR	56
<input type="checkbox"/> CTPT	1
<input type="checkbox"/> DX	238
<input type="checkbox"/> KO	10
<input type="checkbox"/> MG	3799

11 More...

Anatomic Site	<p>Click the box next to each anatomical site you want to select.</p> 
Species	<p>Click the box next to the species you want your search results to represent, either human or Mus musculus (mouse).</p> <p>blocked URL</p>
Phantoms	<p>Click the box next to the phantom option you want to select.</p> <p>blocked URL</p>
At least X time point (DICOM studies)	<p>Enter the minimum number of time points that match the criteria of your search. This filter allows you to see subjects that have more than one DICOM study (that is, the patient was seen at multiple time points).</p> 
3rd-Party Analysis Results	<p>3rd-party analysis results are derived data (e.g. segmentations) that were contributed by researchers who were not part of the group that originally submitted a collection to TCIA.</p> <p>Click the box next to each third-party analysis results option you want to select. Only DICOM data from third-party analysis results appear when using this search filter. A full listing of all third-party analysis data inclusive of non-DICOM formats can be found in the Analysis Results Directory.</p> <p>blocked URL</p>
At least X time point (DICOM studies)	<p>Enter the minimum number of time points that match the criteria of your search. This filter allows you to see subjects that have more than one DICOM study (that is, the patient was seen at multiple time points).</p> <p>blocked URL</p>
Date Released	<p>Enter a From and To date to narrow your search results to studies first made available during that date range.</p> <p>Alternately, select the Apply "Available" date range box to exclude studies that were unavailable during the selected date range.</p> 

Subject IDs	<p>Enter Subject IDs associated with the image series you want to receive in your search results. Separate each Subject ID with a comma and then click Apply Subject IDs.</p> <div><p>▼ Subject IDs</p><p>Enter comma separated ID(s)</p><div></div><p>Apply Subject IDs</p></div>
-------------	---

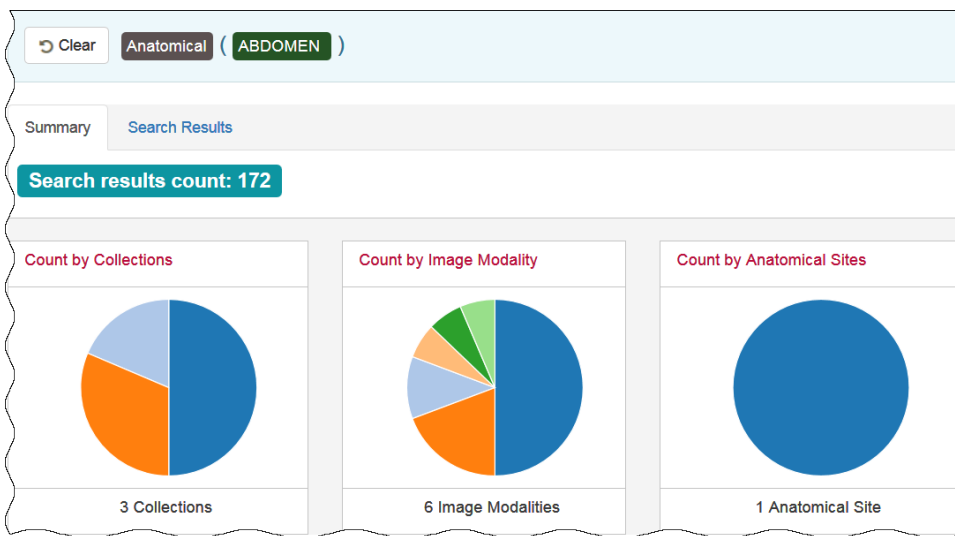
3. Select which columns you want to have appear in the detailed search results on the Search Results tab by clicking  at the top of the Search Results tab. The Pick Columns panel appears.

Pick columns

- ☒ Cart
- ☒ Collection ID
- ☒ Subject ID
- ☒ Studies
- ☒ Total Studies
- ☒ Series
- ☒ Total Series

Search results are shown in two different ways, as a summary and as detailed search results, and which one appears first matches your last choice. The Summary tab shows updated pie charts and the number of image series in the search results.

The Summary tab shows updated pie charts and the number of image series in the search results.



Click the Search Results tab for [more detailed results](#).